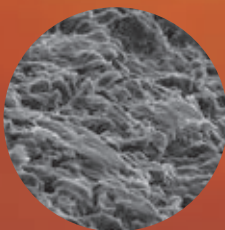


No. 300

# Wood-Compo Screwdriver



Maintenance of cars, motorbikes and machines always involves oils. Wood-compo screwdriver's coarse wood powder on the grip surface stops the oil flow against the tightening torque, producing an outstanding non-slip grip effect.



A D V A N C E D

## NON-SLIP

T E C H N O L O G Y

**No. 300**

### Wood-Compo Screwdriver

The grip part is made by unique mold injection technique for "wood resin" which is a compound of wood powder and plastic. Wood powder is the main material, realizing texture and feeling to fit comfortably in your hand like those made of natural wood.



※The above illustration is for reference only.

HAND TOOLS

BITS & SOCKETS

ELECTRIC TOOLS

AIR TOOLS

STATIC SOLUTIONS

GASOLINE ENGINE TOOLS

### No. 300 Wood-Compo Screwdriver PAT.

- Extraordinary non-slip grip; Secure working efficiency even with oily hands.
- Wood-composite resin, reproducing the natural material texture.
- Rust-resistant black chrome plating shank.



No.300							Inner Ctn.	Outer Ctn.	EDP No.
⊖ 5.5× 75	5.5	0.8	75	5.5	30	182	6	120	120021
⊖ 6× 100	6.0	0.9	100	6.4	32	215	6	120	120022
⊖ 6× 150	6.0	0.9	150	6.4	32	265	6	120	120027
⊖ 8× 150	8.0	1.1	150	8.0	35	275	6	120	120023
⊕ 1× 75	⊕No.1	75	5.5	30	182	6	120	120024	
⊕ 2× 100	⊕No.2	100	6.4	32	215	6	120	120025	
⊕ 2× 150	⊕No.2	150	6.4	32	265	6	120	120029	
⊕ 3× 150	⊕No.3	150	8.0	35	275	6	120	120026	

### No. B-330 Wood-Compo Tang-Thru Screwdriver PAT.

- Extraordinary non-slip grip; Secure working efficiency even with oily hands.
- Tang-thru type, which can be tapped by a hammer. With star-shaped nut.
- Rust-resistant black chrome plating shank.



No.B-330							Inner Ctn.	Outer Ctn.	EDP No.
⊖ 5.5× 75	5.5	0.8	75	5.5	30	183	6	120	120041
⊖ 6× 100	6.0	0.9	100	6.4	32	217	6	120	120042
⊖ 6× 150	6.0	0.9	150	6.4	32	267	6	60	120043
⊖ 8× 150	8.0	1.1	150	8.0	35	277	6	60	120044
⊕ 1× 75	⊕No.1	75	5.5	30	183	6	120	120045	
⊕ 2× 100	⊕No.2	100	6.4	32	217	6	120	120046	
⊕ 2× 150	⊕No.2	150	6.4	32	267	6	60	120047	
⊕ 3× 150	⊕No.3	150	8.0	35	277	6	60	120048	

### No. B-300 Wood-Compo S/D (w/hanging card) PAT.

- Extraordinary non-slip grip; Secure working efficiency even with oily hands.
- Wood-composite resin, reproducing the natural material texture.
- Rust-resistant black chrome plating shank.



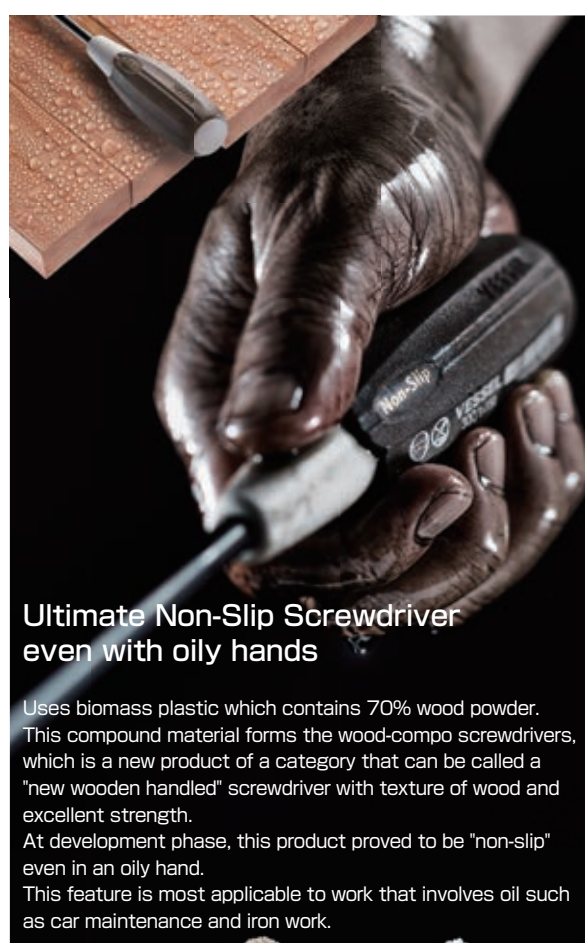
No.B-300							Inner Ctn.	Outer Ctn.	EDP No.
⊖ 5.5× 75	5.5	0.8	75	5.5	30	183	6	120	120071
⊖ 6× 100	6.0	0.9	100	6.4	32	217	6	120	120072
⊖ 6× 150	6.0	0.9	150	6.4	32	267	6	60	120073
⊖ 8× 150	8.0	1.1	150	8.0	35	277	6	60	120074
⊕ 1× 75	⊕No.1	75	5.5	30	183	6	120	120075	
⊕ 2× 100	⊕No.2	100	6.4	32	217	6	120	120076	
⊕ 2× 150	⊕No.2	150	6.4	32	267	6	60	120077	
⊕ 3× 150	⊕No.3	150	8.0	35	277	6	60	120078	

### No. 320 Wood-Compo Screwdriver (Stubby Type) PAT.

- Stubby type, which is convenient for tightening screws in cramped spaces.
- Wood-composite resin, reproducing the natural material texture.
- Rust-resistant black chrome plating shank.



No.320							Inner Ctn.	Outer Ctn.	EDP No.
⊖ 6× 15	6.0	0.9	15	6.0	35	68	6	120	120035
⊕ 2× 15	⊕No.2	15	6.0	35	68	6	120	120037	



Ultimate Non-Slip Screwdriver even with oily hands

Uses biomass plastic which contains 70% wood powder. This compound material forms the wood-compo screwdrivers, which is a new product of a category that can be called a "new wooden handled" screwdriver with texture of wood and excellent strength. At development phase, this product proved to be "non-slip" even in an oily hand. This feature is most applicable to work that involves oil such as car maintenance and iron work.



One point

## No. B-340TX

### Wood-Compo TORX Screwdriver

PAT.



- Extraordinary non-slip grip; Secures working efficiency even with oily hands.
- Wood-composite resin, reproducing the natural material texture.
- Non-electrolytic plating, keeping the precise tip quality.
- Also good for tamper-proof TORX screws.



No. B-340TX						Inner Ctn.	Outer Ctn.	EDP No.
T10H×80	2.72	80	5.5	30	188	6	120	120081
T15H×80	3.26	80	5.5	30	188	6	120	120082
T20H×120	3.84	120	5.5	30	228	6	120	120083
T25H×120	4.40	120	6.4	32	236	6	60	120084
T27H×120	4.96	120	6.4	32	236	6	60	120085
T30H×120	5.49	120	8.0	35	246	6	60	120086
T40H×120	6.60	120	8.0	35	246	6	60	120087

TORX® is a registered trademark of Acument™ Intellectual Properties, LLC (USA). VESSEL has a manufacturing license in Japan and selling same to the world.

## No. B-380NT

### Wood-Compo Socket Screwdriver

PAT.



- Extraordinary non-slip grip; Secures working efficiency even with oily hands. Wood-composite resin, reproducing the natural material texture.
- Black oxide plated socket.
- Rust resistant chrome plating. Hexagonal shank for fastening with a wrench.



No. B-380NT							Inner Ctn.	Outer Ctn.	EDP No.	
A/F 5 ×125	5	8	18	125	5.0	30.0	224	6	60	120091
A/F 5.5×125	5.5	9	18	125	5.0	30.0	224	6	60	120092
A/F 7 ×125	7	10	18	125	5.0	30.0	224	6	60	120093
A/F 8 ×125	8	12	20	125	5.0	32.0	233	6	60	120094
A/F 10×125	10	15	20	125	7.0	32.0	233	6	60	120095
A/F 12×150	12	17	20	125	7.0	32.0	233	6	60	120096
A/F 13×150	13	19	22	125	7.0	32.0	233	6	60	120097
A/F 14×150	14	19	22	125	7.0	32.0	233	6	60	120098

## No. B-370 Non-slip Tang-Thru Screwdrivers

- Unique Non-Slip finish that prevents slipping even if oil adheres to the grip.



- Tang-thru type with a large nut. Good for heavy duty work.
- The end of the handle has a color ring facilitates to distinguish the tip difference at a glance.



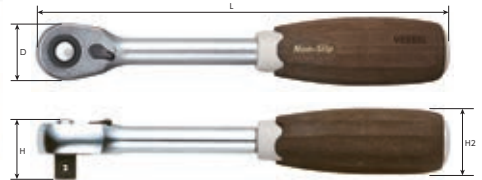
No. B-370							Inner Ctn.	Outer Ctn.	EDP No.
⊖ 5.5×75	5.5	0.8	75	5.5	27.4	183	6	60	267590
⊖ 6 ×100	6.0	0.9	100	6.4	30.7	226	6	60	267591
⊖ 8 ×150	8.0	1.1	150	8.0	36.2	290	6	60	267592
⊕ 1 ×75	⊕No.1	75	5.5	27.4	183		6	60	267593
⊕ 2 ×100	⊕No.2	100	6.4	30.7	226		6	60	267594
⊕ 3 ×150	⊕No.3	150	8.0	36.2	290		6	60	267595

## No. HRH

### Wood-Compo Ratchet Handle NEW



- Wedge type 72-tooth gear ratchet realizes a ultra small and highly durable head.
- Non-slip wood-composite handle 1/4sq.(6.35mm), reproducing the natural material texture.



No. HRH	Designation	Feed Angle	D	H	H2	L	Inner Ctn.	Outer Ctn.	EDP No.
HRH2-W	1/4"sq.(6.35mm)	5°	20	20	30	145	6	60	162004
HRH3-W	3/8"sq.(9.5mm)	5°	25	27	30	180	6	60	162005

## No. HRH

### Wood-Compo Swivel Ratchet Handle NEW



- Swiveling low-height ratchet head.
- Non-slip grip with constrictions good for use in a deep area.



No. HRH	Designation	Feed Angle	D	H	H2	L	Inner Ctn.	Outer Ctn.	EDP No.
HRH2-SW	1/4"sq.(6.35mm)	5°	32	26.4	19.5	169	6	60	162104
HRH3-SW	3/8"sq.(9.5mm)	5°	32	29.5	19.5	169	6	60	162105

## No. HRW2001M-W

### Wood-Compo Socket Wrench Set NEW

- Wedge type 72-tooth gear ratchet realizes a ultra small and highly durable head.
- Non-slip wood-composite handle 1/4sq.(6.35mm), reproducing the natural material texture.
- Surface contact sockets, avoiding the damage on the edges of bolts or nuts.



1/4"sq.(6.35mm) 36pcs.

No. HRW2001M-W	Set content	EDP No.
	Wood-Compo ratchet handle 1/4"sq.(6.35mm)	162001
	Wood-Compo stubby handle 1/4"sq.(6.35mm)	
	Universal socket adaptor 1/4"sq.(6.35mm)	
	Extension bar Overall length 100mm 1/4"sq.(6.35mm)	
	Bit socket adaptor 1/4"sq.⇔1/4"hex.	
	1/4"sockets: 4, 4.5, 5, 5.5, 6, 7, 8, 9, 10, 11, 12, 13, 14mm	
	Bits: ⊖4, 6, ⊕1, 2, 3, H1.5, H2, H2.5, H3, H4, H5, T10, T15, T20, T25, T27, T30, T40	

Inner Ctn.: 3 sets, Outer Ctn.: 9 sets

HAND TOOLS

BITS & SOCKETS

ELECTRIC TOOLS

AIR TOOLS

STATIC SOLUTIONS

GASOLINE ENGINE TOOLS

## No. HRW3002M-W

### Wood-Compo Socket Wrench Set **NEW**

- Wedge type 72-tooth gear ratchet realizes a ultra small and highly durable head.
- Non-slip wood-composite handle 3/8sq.(9.5mm), reproducing the natural material texture.
- Surface contact sockets, avoiding the damage on the edges of bolts or nuts.



3/8"sq.(9.5mm) 16pcs.

	Set content	EDP No.
<b>HRW3002M-W</b>	Wood-Compo ratchet handle 3/8"sq.(9.5mm) Universal socket adaptor 3/8"sq.(9.5mm) Sliding T-shaped handle 3/8"sq.(9.5mm) Extension bar Overall length 150mm 3/8"sq.(9.5mm) Extension bar Overall length 75mm 3/8"sq.(9.5mm) 3/8" sockets: A/F7, 8, 10, 11, 12, 13, 14, 17, 19, 21, 22mm	162002

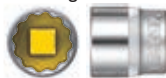
Inner Ctn.: 3 sets, Outer Ctn.: 9 sets

## No. HRW2004M-SW

### Wood-Compo Swivel Socket Wrench Set **NEW**

- The non-slip ratchet handle has the constricted end, which facilitates tightening work in a deep area.
- Low height ratchet swiveling head can be used for quick turning like a screwdriver, by setting the handle vertically to the head.
- Dodecagonal sockets for improved workability.
- Quick spinner to turn quickly sockets, even a small one.

Dodecagonal socket



Quick spinner, turning quickly sockets, even a small one.



1/4"sq.(6.35mm) 21pcs.

	Set content	EDP No.
<b>HRW2004M-SW</b>	Wood-Compo swivel ratchet handle 1/4"sq. (6.35mm) Extension bar Overall length 55mm 1/4"sq. (6.35mm) Extension bar Overall length 150mm 1/4"sq. (6.35mm) Quick spinner 1/4"sq. (6.35mm) Hex key wrench: H2.5, 3, 4, 5, 6, 8mm 1/4"sockets: A/F5, 5.5, 6, 7, 8, 9, 10, 11, 12, 13, 14mm	162102

Inner Ctn.: 3 sets, Outer Ctn.: 9 sets

## No. HRW2303M-W

### Wood-Compo Socket Wrench Set **NEW**

- Wedge type 72-tooth gear ratchet realizes a ultra small and highly durable head.
- Non-slip wood-composite handle 1/4sq.(6.35mm) and 3/8sq.(9.5mm), reproducing the natural material texture.
- Surface contact sockets, avoiding the damage on the edges of bolts or nuts.



1/4"sq.(6.35mm)/3/8"sq.(9.5mm) 36pcs.

	Set content	EDP No.
<b>HRW2303M-W</b>	Wood-Compo ratchet handle 3/8"sq. (9.5mm) Wood-Compo spinner handle 1/4"sq. (6.35mm) Universal socket adaptor 3/8"sq. (9.5mm) Extension bar Overall length 150mm 3/8"sq. (9.5mm) Bit socket adaptor 1/4"sq.⇔1/4"hex. 1/4"sockets: A/F4, 4.5, 5, 5.5, 6, 7, 8mm 3/8"sockets: A/F10, 11, 12, 13, 14, 17, 19, 21, 22mm Bits: ⌀4, 6, ⚙1, 2, 3, H3, H4, H5, H6, T10, T15, T20, T25, T30, T40	162003

Inner Ctn.: 3 sets, Outer Ctn.: 9 sets

## No. HRW3005M-SW

### Wood-Compo Swivel Socket Wrench Set **NEW**

- The non-slip ratchet handle has the constricted end, which facilitates tightening work in a deep area.
- Low height ratchet swiveling head can be used for quick turning like a screwdriver, by setting the handle vertically to the head.
- Dodecagonal sockets for improved workability.
- Deep hole sockets, also dodecagonal, are included.
- Quick spinner to turn quickly sockets, even a small one.

Dodecagonal socket



Deep hole socket



Depth: ⌀ A/F 8 ..... 15mm  
A/F 10/12/14/30mm

Quick spinner, turning quickly sockets, even a small one.



3/8"sq.(9.5mm) 16pcs.

	Set content	EDP No.
<b>HRW3005M-SW</b>	Wood-Compo swivel ratchet handle 3/8"sq. (9.5mm) Extension bar Overall length 55mm 3/8"sq. (9.5mm) Quick spinner 3/8"sq. (9.5mm) Deep socket 3/8"sq. (9.5mm): H8, 10, 12, 14mm 3/8"sockets: A/F8, 10, 12, 13, 14, 17, 19, 21, 24mm	162103

Inner Ctn.: 3 sets, Outer Ctn.: 9 sets