

# New

## Air Nipper Series with Safety Lever No.GT-NL3/NL5/NL7/NL10/NL12/NL20/NL30/NL50



# Hand-Held Air Nippers with Safety Lever

Newly developed from the market requests.

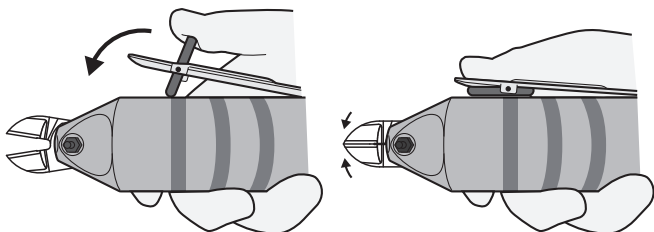
### Air nipper suitable for manual cutting work.

The GT-NL series is an air nipper used by hand. **Blades close when the lever is gripped and open when the lever is held off.**

The air nippers make it easy to cut and drill holes in metals that are difficult to cut with diagonal pliers. (Some air nippers should be newly designed.) Reduces the burden of the workers. Best for the process with a large amount of work.

### Safety lever is equipped. Prevents unexpected operations.

The nipper body is knurled for anti-slip. The safety lever is of the structure **that the lever cannot be operated unless the pin is folded down.** This prevents the nipper from unexpected operation when the rounded body rotates on a table, allowing the safe and efficient work.



### Existing blades can be used.

The existing blades for the same capacity class (such as 3, 5, 7...) can be used as a replacement blade. A variety of blades are available: cutting of plastic and metallic items, crimping, nipping, and so on.

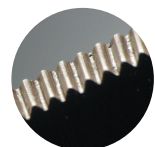
### Recommended to the following cases:

- ▶ Working with diagonal pliers causes fatigue in the hand due to the large amount of work involved.
- ▶ Cutting metal wire materials requires a lot of force when working by hand.
- ▶ Want to simplify pipe crimping and making holes in thin sheets.
- ▶ For cutting cloth fabrics, cotton threads, and aramid fibers (polymer material), air scissors type is also recommended.



Air Scissor No.GT-H30

Micro edge blades are also available for the products that are hard to cut.

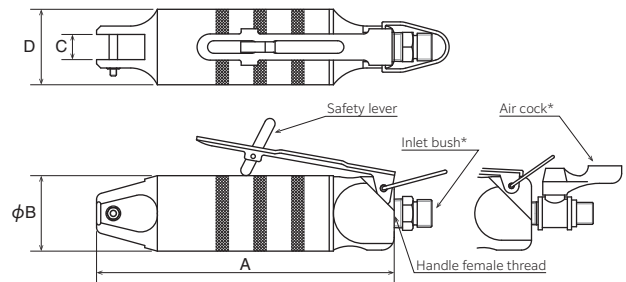


Serrated micro edge (enlarged)

## Air Nippers with Safety Lever *New*

**GT-NL**

- For cutting plastic and steel, or for crimping work.
- With the made-to-order blades, the supported range of applications is endless.
- Safer and more efficient. Less fatigue.



### Reference

Capacity φ(mm)				Code No.	Model No.	Size (mm)				Air Consumption (cyl/str.)	Air Pressure (MPa)	Weight (g)	Handle Female Thread dia.	Hose Coupling	JAN (4907587)
Soft Plastic	Hard Plastic	Copper Wire	Steel Wire			A	B	C	D						
2.0		1.0	0.5	360771	GT-NL3	112	23	7	14	45	0.4~0.5	115	Rc 1/8	Rc 1/4	035257
2.0		1.0	0.5	360772	GT-NL5	103	30	7	17	64	0.4~0.5	157	Rc 1/8	Rc 1/4	035264
3.0	2.0	1.6	1.0	360773	GT-NL7	123	34	9	17	116	0.4~0.5	201	Rc 1/4	Rc 1/4	035271
4.0	2.6	1.8	1.2	360774	GT-NL10	132	34	9	17	116	0.4~0.5	208	Rc 1/4	Rc 1/4	035288
4.5	4.0	2.3	1.7	360775	GT-NL12	142	36	12	20	116	0.5~0.6	242	Rc 1/4	Rc 1/4	035295
7.0	5.0	2.6	2.0	360776	GT-NL20	148	45	12	23	230	0.5~0.6	372	Rc 1/4	Rc 1/4	035301
10.0	6.5	3.3	2.8	360777	GT-NL30	185	56	17	30	584	0.5~0.6	627	Rc 1/4	Rc 1/4	035318
		5.5	4.5	360778	GT-NL50	237	75	25.2	43	1170	0.5~0.6	1211	Rc 1/4	Rc 1/4	035325

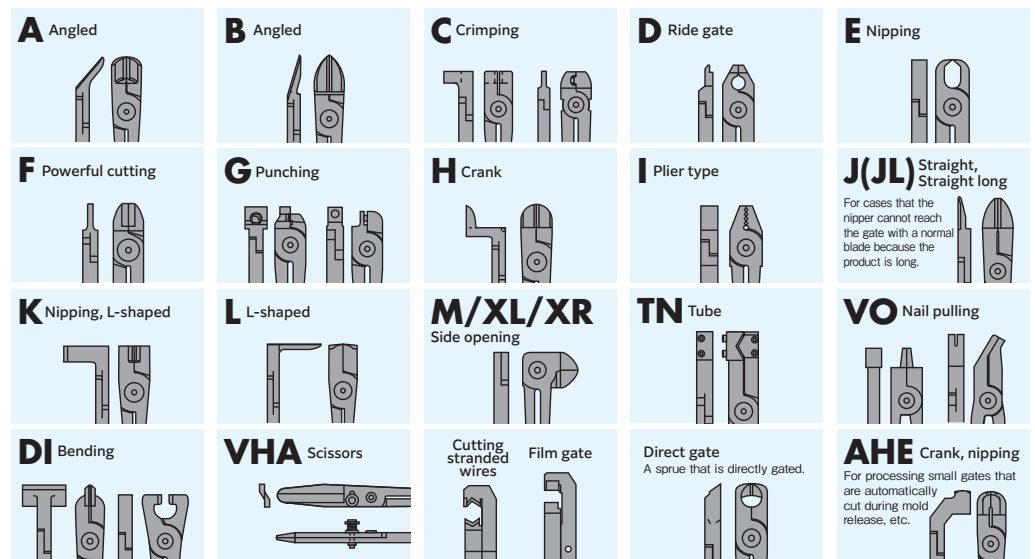
The capacity is for reference only when mounting a standard blade. Subject to the blade type and the material of the product to cut.

※Working air hose inner dia.: 5mm ※Overall length / Weight: Accessories not included.

The existing GT-N will be discontinued as soon as the stock runs out, and the GT-NL will be the replacement model after the discontinuation.

## We design your custom-made blades, even from 1 piece!

VESSEL provides solutions of customized blades for a wide variety of applications. Custom-made blades are designed flexibly according to a wide range of demands and offered at the minimum cost and lead-time. See the examples below. We accept orders for small quantity as well.



### ⚠ Cautions

- Do not touch the blade.
- Always wear protective goggles and earplugs when working with the product.
- When installing or replacing blades or the nipper, be sure to shut off the power source.
- Do not use the product if any abnormality such as cracks, chipping, abrasion, or deformation is found.
- Do not use the product in which electricity is running.
- The product may cause vibration.
- Do not modify the product.

## VESSEL Co., Inc.

17-25, Fukae-Kita 2-chome, Higashinari-ku, Osaka 537-0001 JAPAN  
 Tel: +81(0)6 6976 7778 Fax: +81 (0)6 6972 9441  
 URL: www.vessel.co.jp/english E-mail: export@vessel.co.jp

## VESSEL EUROPE

contact@vessel-europe.com  
 www.vessel-europe.com

### Distributed by

24060621.002

● Specifications, dimensions, and others may be subject to change without prior notice.