

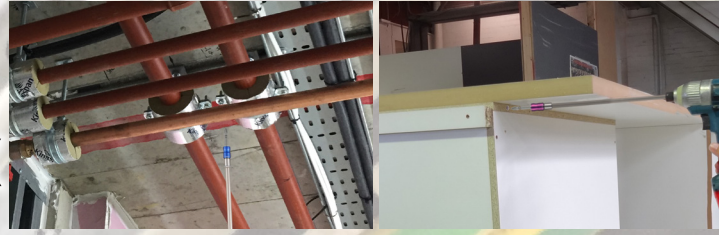
New

SLIM LONG BIT HOLDER

No.EXH-100 / EXH-150 / EXH-200 / EXH-250

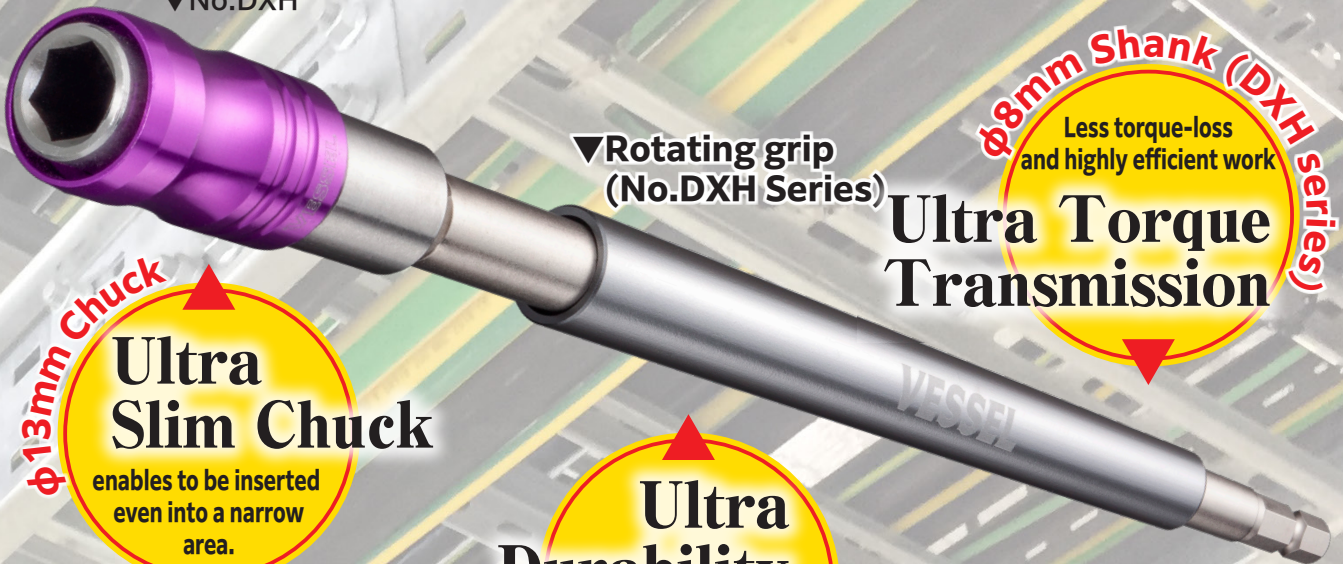
SLIM LONG BIT HOLDER DX

No.DXH-250 / DXH-350 / DXH-450 / DXH-600



**For fastening work
in the narrow and deep area!**

▼No.DXH



▼Rotating grip
(No.DXH Series)

φ8mm Shank (DXH series)
Less torque-loss
and highly efficient work
**Ultra Torque
Transmission**

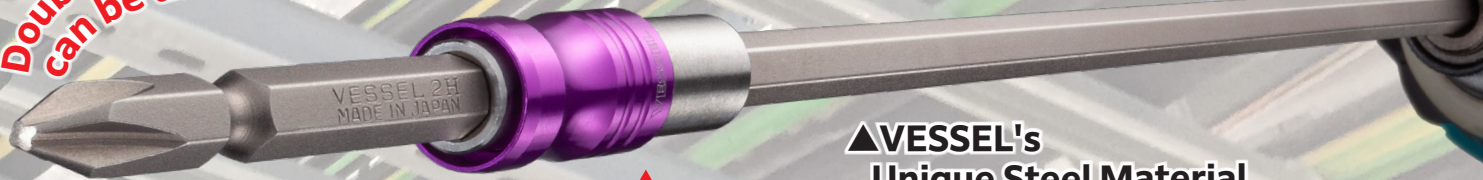
φ13mm Chuck
**Ultra
Slim Chuck**
enables to be inserted
even into a narrow
area.

**Ultra
Durability**
High hardness design
with excellent
rigidity

*Double-ended
can be used!*

▼Aluminum Sleeve

▼No.EXH



▲VESSEL's
Unique Steel Material
(No.EXH Series)

**Ultra
Light-weight**
No fatigue in the hands,
even when working by
looking up.

**Resistant to twist and breaking
Extra Superalloy**

Use with
40V
(also 18V)
power tools

Fully hardened shank is rigid and resistant to bending.

The EXH series and the DXH series have the fully hardened shank. They don't bend in the case of incidental drop or stomping.



The pull-release sleeve chuck prevents bits from dropping.

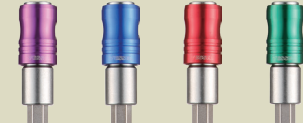
From our investigation that the bit is frequently taken off from the bit holder when taking it out after work, a pull-release type of sleeve is adopted to avoid such incident.

Bit does not drop even when the edge of the sleeve hit during pulling it out of the working space.



Durable aluminum sleeve adopted. Anodized finish, resistant to chemicals. Color variations according to the size.

The sleeve is made of anodized aluminum. Different colors are applied to each size. This helps the user recognize the size at glance.



SLIM LONG BIT HOLDER

EXH-250(250mm)



EXH-200(200mm)



EXH-150(150mm)



EXH-100(100mm)



SLIM LONG BIT HOLDER DX

DXH-600(600mm)



DXH-450(450mm)



DXH-350(350mm)



DXH-250(250mm)



SLIM LONG BIT HOLDER No. EXH SLIM LONG BIT HOLDER DX No. DXH

No. EXH SLIM LONG BIT HOLDER

Model No.	Applicable bit size (mm)	Outer dia. (mm)	OAL (mm)	Inner carton	Outer carton	EDP No.
EXH-100	6.35	13	100	5	100	486786
EXH-150	6.35	13	150	5	100	486787
EXH-200	6.35	13	200	5	100	486788
EXH-250	6.35	13	250	5	50	486789

Card size: 40x160mm

No. DXH SLIM LONG BIT HOLDER DX

Model No.	Applicable bit size (mm)	Outer dia. (mm)	OAL (mm)	Inner carton	Outer carton	EDP No.
DXH-250	6.35	13	250	5	50	486790
DXH-350	6.35	13	350	5	50	486791
DXH-450	6.35	13	450	-	5	486792
DXH-600	6.35	13	600	-	5	486793

Card size: 40x160mm

⚠ Cautions

- Check the correct application, size and usage before use.
- Do not run dry.
- Do not perform the heavy load drilling or bolt fastening because of a risk of damage.
- Confirm no loosening of screw after tightening.
- Keep this product away from children.

VESSEL Co., Inc.

17-25, Fukae-Kita 2-chome, Higashinari-ku, Osaka 537-0001 JAPAN
Tel: +81 (0)6 6976 7778 Fax: +81 (0)6 6972 9441
E-mail: export@vessel.co.jp URL: www.vessel.co.jp/english/

VESSEL EUROPE

contact@vessel-europe.com
www.vessel-europe.com

VESSEL TOOLS U.S.A., INC.

1012 Brioso Drive, Suite 107, Costa Mesa, CA 92627 U.S.A.
Tel: +1 714 902 2112 Fax: +1 714 908 8111
E-mail: kkimura@vessel.co.jp / y-nakajima@vessel.co.jp
URL: www.vesseltoolsusa.com

Distributed by

22090000.00

● Specifications, dimensions, and others are subject to change without prior notice.