

New

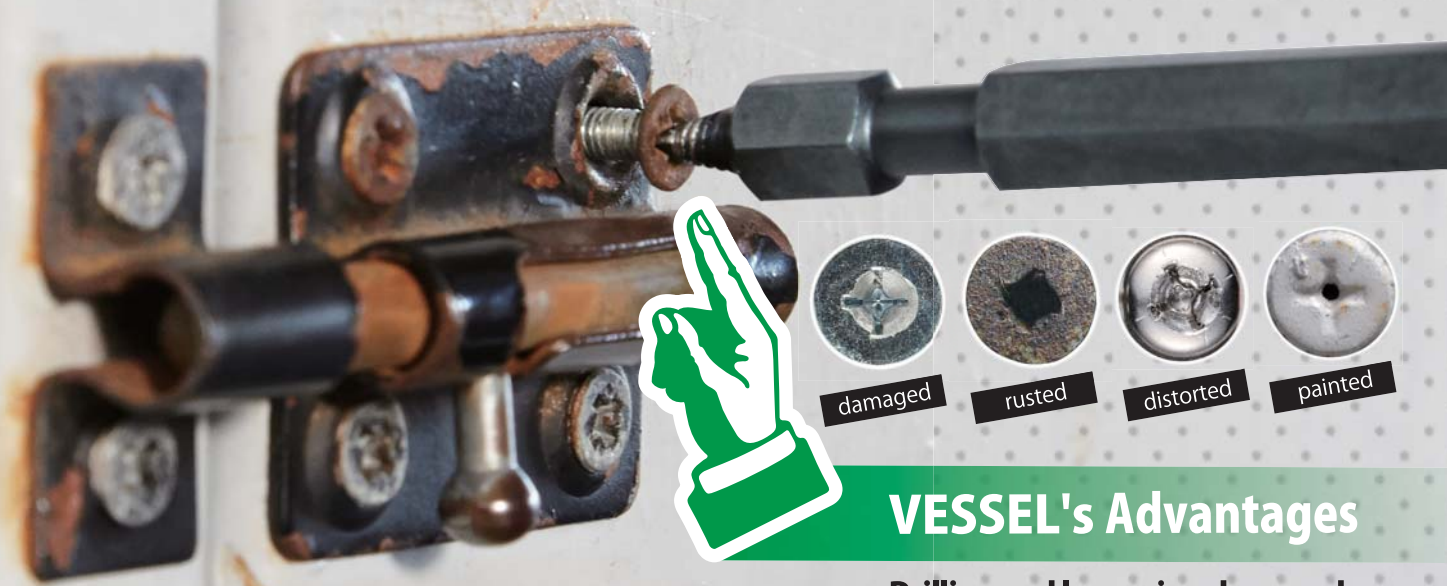
Damage Screw Remover Bit

No.NEJ-1/No.NEJ-2/No.NEJ-3

For a use with electric S/D only



How easy to remove damaged screws!



VESSEL's Advantages

Drilling and loosening damaged screws can be conducted in the same rotating direction.



▶ Scan this code with your smart phone for "How to use the NEJ bits"

Whenever in trouble

Can loosen easily such screws as damaged, stripped, rusted, and/or painted that cannot do with a screwdriver!

Eye-catching O-ring

- * Useful to distinguish the drill side and the thread side.
- * Easy to differentiate the size.

Set the counterclock rotation.

Turn counterclockwise only to make a hole on the damaged screw or loosen it.

No.NEJ-1 M3 ~ M4 EDP No. 485424



No.NEJ-2 M5 ~ M6 EDP No. 485425



No.NEJ-3 M6 ~ M8 EDP No. 485426



Damaged Screw Remover Bit *New* **VESSEL**

Let us think.

Applicable Screws The NEJ bit can be used if it is possible to drill a hole in the center of the screw hole.

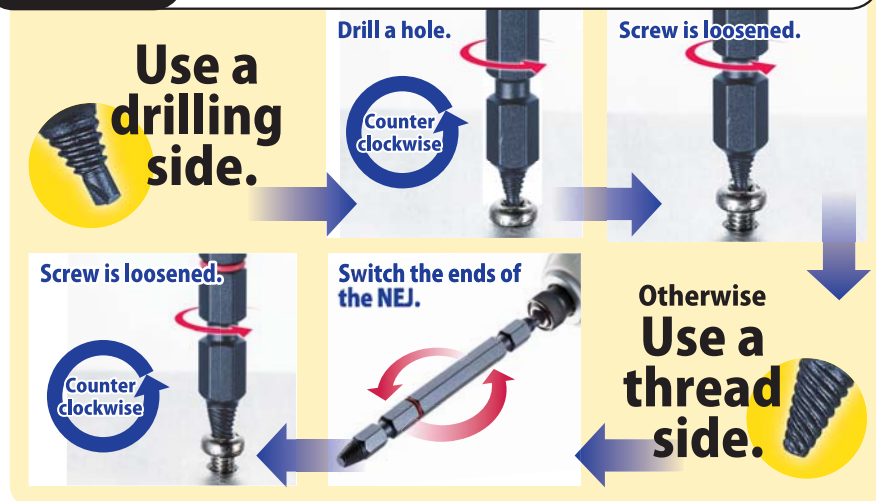


Screws that can be handled The NEJ is not suitable for screws harder than 25HRC. Reverse screws are not suitable.

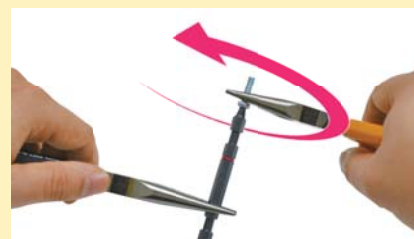


How to Use APPLY THE SLOWEST SPEED MODE OF THE POWER TOOL WHEN DRILLING.

How to Remove screws from the NEJ bit.



After removing the screw, the NEJ bit may bite into the screw drive hole. In this case, use a pincer or alike and remove the bit as shown in the illustration.



- ① Use 2 pincers and pinch the NEJ bit and the threads of the removed screw.
- ② Then, turn clockwise the pincer pinching the screw.



Specifications

Damage Screw Remover Bit

Model No.	Applicable screws	Ring Color	Overall Length	Tip dia. (Drill)	Tip dia. (Thread)	opposite sides (mm)	EDP No.
NEJ-1	M3~M4	Yellow	82	1.8	1.7	6.35	485424
NEJ-2	M5~M6	Pink	82	2.7	2.6	6.35	485425
NEJ-3	M6~M8	Blue	82	3.7	3.6	6.35	485426

Package size:135×50×8mm

Inner Ctn. :10-pc Outer Ctn. :200-pc

Damage Screw Remover Bit (3-pc set)

Model No.	Set Content	EDP No.
NEJ-123	NEJ-1 / NEJ-2 / NEJ-3 1-pc each	485428

Package size:135×63×8mm

Inner Ctn. :10-pc Outer Ctn. :200-pc

CAUTION

- Use the right size for proper applications. ● Avoid overload because it causes injuries and also damages screws. ● Use electric screwdrivers only. Don't use impact power tools by giving an impact during operation. ● Be careful well about the heat on the drilling side soon after making a hole on a damaged screw. ● Be careful well about damages on the drilling side and machined chips.
- Wear protective glasses and make hands and face away from the machined chips during use. ● Stop immediately if any error is identified. ● This product is NOT suitable for screws which firmly adhered. ● In the home, keep this product away from children.
- Product specifications, dimensions, and other information are subject to change without notice.

VESSEL Co., Inc.

17-25, Fukae-Kita 2-chome, Higashinari-ku, Osaka 537-0001 JAPAN
Tel : +81(0)6 6976 7778 Fax : +81(0)6 6972 9441

VESSEL EUROPE

6, avenue du 1er Mai, ZAE Les Glaises, 91120 Palaiseau FRANCE
Tel : +33(0)1 69 19 17 42 Fax : +33(0)1 69 19 42 20

E-mail : export@vessel.co.jp URL : http://www.vessel.co.jp/english/

Distributed by

17040721.02