

New

Problem Solving Bits

No. DC - Cushion Bit

No. DZ - Zigzag Bit

No. DS - Slender Bit

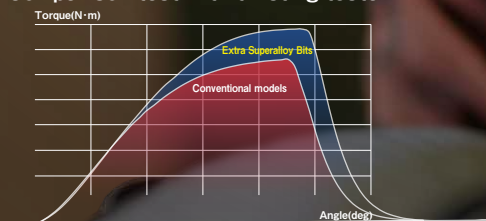
No. DRB - Rib Bit

"Ductility" and "Hardness" corresponding to the power and the speed of the cordless impact drivers

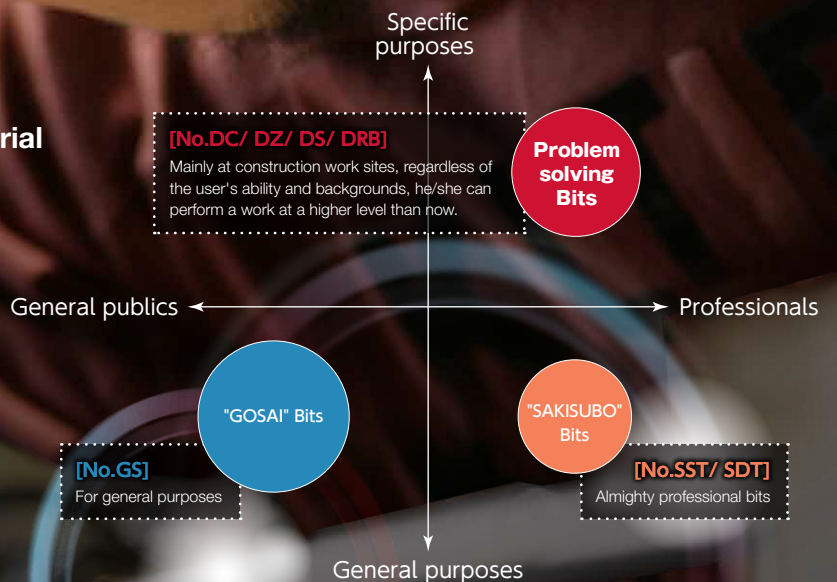
Resistant to twist and breaking Extra Superalloy

- Highest hardness innovative material "Extra Superalloy (62HRC)"
- Deformation resistant
- Accurate torque transmission

Comparison test with twisting tester



Made in Japan



Solutions for the era of the 40V power tools

Tighten a screw perfectly without center run-out in a cramped space.

Cushion Bit No. DC14/ DC16

"Cushion ring" suppresses run-out of a bit.

For fixing wedges on the stairs or putting up a curtain rail

Center runout 0.119

Cushion Bit

Center runout 0.367

Other brand

The center of the Cushion Bit DC is within the impeccable range, compared with other bits.

Use the recessed type for a cramped space!

The zigzag shaped tip does not strip the screw head.

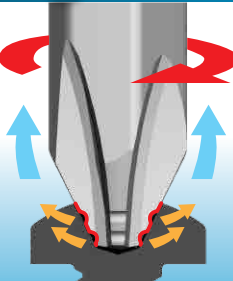
Zigzag Bit No. DZ14/ DZ16

For difficult work with unstable items or screw tightening from a diagonal angle.

For fixing studs and installing handrails.

For items that are not easily fastened.

The jagged tip-end fits perfectly the screw head recess and prevents come-out of the bit.



"Slim tip-end" helps to see well the head of a slim screw.

Slender Bit No. DS14

For small head screws, or for the work in which the screw head should be below the surface.

For fastening works with concrete panels and tightening mini screws for floor construction.

Optimum for fastening works in which the screw head should not stick out.

Standard Bit

Slender Bit DS

See how much the screw head is seen when the Slender Bit DS is used!

Rib shaped tip-end, resistant to twisting and breakage.

Rib Bit No. DRB14/ DRB16

For hard joint and repeated tightening work. Stands with high hardness screws and stainless screws

For the ALC member attachment to the light-gauge steel, and the siding board attachment.

Result of tightening test of 20pcs of drill screw with a 38kg-weight applied power tool.

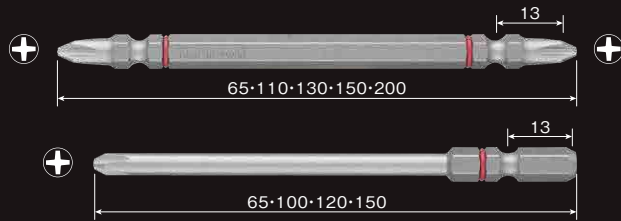


The tip-end of the Rib Bit DRB is obviously strong!

High durability even with drill bits!

No.DC Cushion Bit

- Cushion ring suppresses the runout of the bit during use.
- Color-coded according to the tip-end size.
- Extra Superalloy material enhances strength and ductility.



EDP	Model No.	Set Contents	Card Size (mm)	JAN (4907587)
485711	DC141065	⊕1× 65 2pcs	160×35×8	029201
485712	DC141110	⊕1×110 2pcs	160×35×8	029218
485713	DC142065	⊕2× 65 2pcs	160×35×8	029225
485714	DC142110	⊕2×110 2pcs	160×35×8	029232
485715	DC142130	⊕2×130 2pcs	180×35×8	029249
485716	DC142150	⊕2×150 2pcs	180×35×8	029256
485717	DC142200	⊕2×200 1pc	230×35×8	029263
485718	DC161065	⊕1× 65 2pcs	160×35×8	029270
485719	DC161100	⊕1×100 2pcs	160×35×8	029287
485720	DC162065	⊕2× 65 2pcs	160×35×8	029294
485721	DC162100	⊕2×100 2pcs	160×35×8	029300
485722	DC162120	⊕2×120 2pcs	180×35×8	029317
485723	DC162150	⊕2×150 2pcs	180×35×8	029324
485724	DC5P2065	⊕2× 65 5pcs	160×70×8	029331
485725	DC5P2110	⊕2×110 5pcs	160×70×8	029348
485726	DC5P2065D	⊕2× 65 5pcs	160×70×8	029355
485727	DC5P2100D	⊕2×100 5pcs	160×70×8	029362

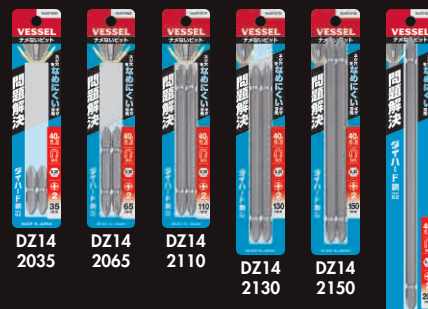


No.DZ Zigzag Bit

- Zigzag shaped tip-end prevents the come-out of the bit, peculiar to the cross recessed screw.
- Extra Superalloy material enhances strength and ductility.

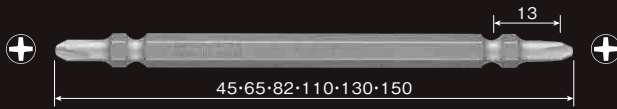


EDP	Model No.	Set Contents	Card Size (mm)	JAN (4907587)
485728	DZ142035	⊕2× 35 2pcs	160×35×8	029379
485729	DZ142065	⊕2× 65 2pcs	160×35×8	029386
485730	DZ142110	⊕2×110 2pcs	160×35×8	029393
485731	DZ142130	⊕2×130 2pcs	180×35×8	029409
485732	DZ142150	⊕2×150 2pcs	180×35×8	029416
485733	DZ142200	⊕2×200 1pc	230×35×8	029423
485734	DZ162065	⊕2× 65 2pcs	160×35×8	029430
485735	DZ162100	⊕2×100 2pcs	160×35×8	029447
485736	DZ162120	⊕2×120 2pcs	180×35×8	029454
485737	DZ162150	⊕2×150 2pcs	180×35×8	029461
485738	DZ5P2065	⊕2× 65 5pcs	160×70×8	029478
485739	DZ5P2110	⊕2×110 5pcs	160×70×8	029485
485740	DZ5P2065D	⊕2× 65 5pcs	160×70×8	029492
485741	DZ5P2100D	⊕2×100 5pcs	160×70×8	029508



No. DS Slender Bit

- Slim tip-end is good for slim screws.
- Extra Superalloy material enhances strength and ductility.

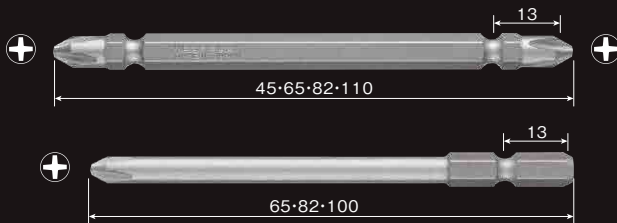


EDP	Model No.	Set Contents	Card Size (mm)	JAN (4907587)
485742	DS141065	⊕1× 65 2pcs	160×35×8	029515
485743	DS141110	⊕1×110 2pcs	160×35×8	029522
485744	DS142045	⊕2× 45 2pcs	160×35×8	029539
485745	DS142065	⊕2× 65 2pcs	160×35×8	029546
485746	DS142082	⊕2× 82 2pcs	160×35×8	029553
485747	DS142110	⊕2×110 2pcs	160×35×8	029560
485748	DS142130	⊕2×130 2pcs	180×35×8	029577
485749	DS142150	⊕2×150 2pcs	180×35×8	029584
485750	DS5P2065	⊕2× 65 5pcs	160×70×8	029591
485751	DS5P2082	⊕2× 82 5pcs	160×70×8	029607
485752	DS5P2110	⊕2×110 5pcs	160×70×8	029614

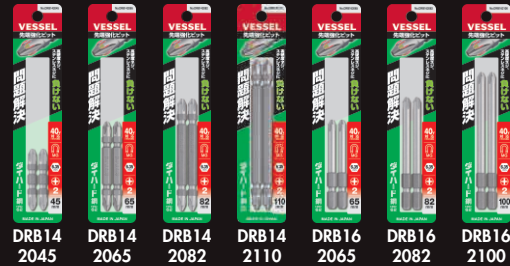


No. DRB Rib Bit

- The special tip-end with ribs enables to be more twist-resistant than general bits.
- Extra Superalloy material enhances strength and ductility.



EDP	Model No.	Set Contents	Card Size (mm)	JAN (4907587)
485753	DRB142045	⊕2× 45 2pcs	160×35×8	029621
485754	DRB142065	⊕2× 65 2pcs	160×35×8	029638
485755	DRB142082	⊕2× 82 2pcs	160×35×8	029645
485756	DRB142110	⊕2×110 2pcs	160×35×8	029652
485757	DRB162065	⊕2× 65 2pcs	160×35×8	029669
485758	DRB162082	⊕2× 82 2pcs	160×35×8	029676
485759	DRB162100	⊕2×100 2pcs	160×35×8	029683
485760	DRB5P2045	⊕2× 45 5pcs	160×70×8	029690
485761	DRB5P2065	⊕2× 65 5pcs	160×70×8	029706
485762	DRB5P2082	⊕2× 82 5pcs	160×70×8	029720
485763	DRB5P2110	⊕2×110 5pcs	160×70×8	029737



Warning

- Wear protective goggles when working.
- Do not use by applying the excessive force.
- Do not use the tool for any purpose other than its intended.
- Do not use for items in which current flows.
- Check the correct application, size and usage before use.
- Do not modify. If heated or processed, it causes a significant deterioration in quality.

VESSEL Co., Inc.

17-25, Fukae-Kita 2-chome, Higashinari-ku, Osaka 537-0001 JAPAN
Tel: + 81 (0)6 6976 7778 Fax: + 81 (0)6 6972 9441
E-mail: export@vessel.co.jp URL : www.vessel.co.jp/english/

VESSEL EUROPE

contact@vessel-europe.com
www.vessel-europe.com

VESSEL TOOLS U.S.A., INC.

1012 Brioso Drive, Suite 107, Costa Mesa, CA 92627 U.S.A.
Tel : +1 714 902 2112 Fax : +1 714 908 8111
E-mail: kkimura@vessel.co.jp/ y-nakajima@vessel.co.jp
URL : www.vesseltoolsusa.com

Distributed by

210631600.00

●Specifications, dimensions, and others are subject to change without prior notice.