

VESSEL

Let us think.

New

**Wood-Compo
Swivel Socket Wrench Set**

Swiveling



Non-slip

For professionals who want to accomplish
the work even one second sooner

Low height head useful for a work in a cramped space

Can reach deep in a cramped space.

Rotation direction switch with hollows

The hollows on the switch enable to easily change the rotation directions (forward or reverse) even with a hand in a glove.

Key for Improved Working Efficiency

Quick turning

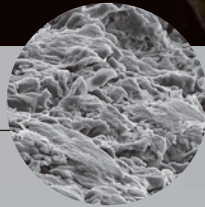
Setting the handle vertically to the ratchet head enables to use this as a screwdriver and to tighten or loosen nuts quickly.

Grip with constrictions useful in a deep area

The constricted end of the grip lets the fingers fit and apply power effectively when tightening even in a deep area.

Non-slip handle

The rough surface that is produced by the wood powders assures beneficial non-slip effect.



Closeup picture of the grip surface

Wood-Plastic Composite

The grip part is formed by the mold injection of a "wood-composite resin", utilizing VESSEL's unique technologies.

The product offers to the users such texture and comfort as the natural wood materials.

Wood powder



Pellet



VESSEL's Unique Technologies

Knurled handle's non-slipness + Polished handle's holding comfort

Both advantages are in one grip.



Knurled handle

+



Polished handle

=



New Shape Non-slip handle



Dodecagonal socket

Convenient dodecagonal type is adopted so as to fit a nut even in a cramped space.



Deep hole socket

* Included in the HRW3005M-SW only

Depth: H8.....15mm
 H10/12/14...30mm

Hexagonal hole has a long depth. Ideal for a use in a limited space because the socket does not go upward together with the ratchet handle while the nut is loosened and that the socket remains the same place.



Quick spinner, turning quickly sockets, even a small one.

The knurled ring facilitates a work using a small socket, which cannot be easily rotated with fingers because of interruption of the ratchet head.



About FOD

FOD is an abbreviation of "Foreign Object Damage". This is a concept originally from the aircraft industry. For the aircraft maintenance, leaving tools in the engine room may induce big accidents. Various countermeasures against misplacement have been in operation. Among these, storage of tools in differently colored double layer urethane foams with a dedicated cutout has been widely adopted, because a missing part is easily recognized.

No. HRW Wood-compo Swivel Socket Wrench Set

1/4"sq.(6.35mm) 21pcs.

No. HRW2004M-SW

Set Contents

- Wood-compo swivel ratchet handle 1/4" sq. (6.35mm)
- Extension bar OAL55mm 1/4" sq. (6.35mm)
- Extension bar OAL150mm 1/4" sq. (6.35mm)
- Quick spinner 1/4" sq. (6.35mm)
- L wrench ● H2.5, 3, 4, 5, 6, 8mm
- 1/4" Socket : H5, 5.5, 6, 7, 8, 9, 10, 11, 12, 13, 14mm

Inner Ctn.: 3 sets,
Outer Ctn.: 9 sets
EDP No. 162102



3/8"sq.(9.5mm) 16pcs.

No. HRW3005M-SW

Set Contents

- Wood-compo swivel ratchet handle 3/8" sq. (9.5mm)
- Extension bar OAL150mm 3/8" sq. (9.5mm)
- Quick spinner 3/8" sq. (9.5mm)
- Deep hole socket 3/8" sq. (9.5mm) :H8, 10, 12, 14mm
- 3/8" Socket : H8, 10, 12, 13, 14, 17, 19, 21, 24mm

Inner Ctn.: 3 sets,
Outer Ctn.: 9 sets
EDP No. 162103



1/4" HRH2-SW

3/8" HRH3-SW

No. HRH Wood-compo Swivel Ratchet Handle



EDP No.	Model	Designation Insertion (mm)	Feed Angle (°)	D Head Width(mm)	H Thickness incl. SQ Head(mm)	H2 Grip(mm)	L Overall Length(mm)
162104	HRH2-SW	1/4"sq. (6.35mm)	5°	32	26.4	19.5	169
162105	HRH3-SW	3/8"sq. (9.5mm)	5°	32	29.5	19.5	169

Inner Ctn.: 6 pcs Outer Ctn.: 60 pcs

Wood-Compo Swivel Socket Wrench Set

VESSEL

Let us think.

No. HRW Wood-compo Socket Wrench Set

1/4"sq.(6.35mm) 36pcs.

No. HRW2001M-W

Set Contents

- Wood-compo ratchet handle 1/4" sq. (6.35mm)
- Wood-compo stubby handle 1/4" sq. (6.35mm)
- Universal socket adaptor 1/4" sq. (6.35mm)
- Extension bar OAL100mm 1/4" sq. (6.35mm)
- Bit socket adaptor 1/4" sq.⇄1/4" hex.
- 1/4" Socket ●: H4, 4.5, 5, 5.5, 6, 7, 8, 9, 10, 11, 12, 13, 14mm
- Bit: ⊖4, ⊖6, ⊕1, ⊕2, ⊕3, H1.5, H2, H2.5, H3, H4, H5, T10, T15, T20, T25, T27, T30, T40



Inner Ctn.: 3 sets,
Outer Ctn.: 9 sets
EDP No. 162001

3/8"sq.(9.5mm) 16pcs.

No. HRW3002M-W

Set Contents

- Wood-compo ratchet handle 3/8" sq. (9.5mm)
- Universal socket adaptor 3/8" sq. (9.5mm)
- Sliding T-shaped handle 3/8" sq. (9.5mm)
- Extension bar OAL150mm 3/8" sq. (9.5mm)
- Extension bar OAL75mm 3/8" sq. (9.5mm)
- 3/8" Socket ●: H7, 8, 10, 11, 12, 13, 14, 17, 19, 21, 22mm



Inner Ctn.: 3 sets,
Outer Ctn.: 9 sets
EDP No. 162002

1/4"sq.(6.35mm)/3/8"sq.(9.5mm) 36pcs.

No. HRW2303M-W

Set Contents

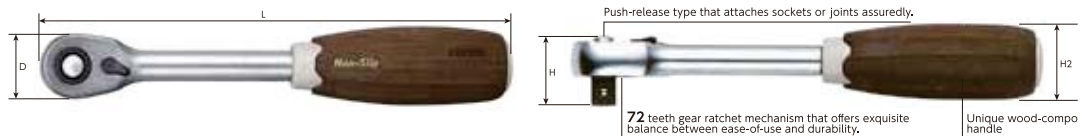
- Wood-compo ratchet handle 3/8" sq. (9.5mm)
- Wood-compo spinner handle 1/4" sq. (6.35mm)
- Universal socket adaptor 3/8" sq. (9.5mm)
- Extension bar OAL150mm 1/4" sq. (6.35mm)
- Bit socket adaptor 1/4" sq.⇄1/4" hex.
- 1/4" Socket ●: H4, 4.5, 5, 5.5, 6, 7, 8mm
- 3/8" Socket ●: H10, 11, 12, 13, 14, 17, 19, 21, 22mm
- Bit: ⊖4, ⊖6, ⊕1, ⊕2, ⊕3, H3, H4, H5, H6, T10, T15, T20, T25, T30, T40



Inner Ctn.: 3 sets,
Outer Ctn.: 9 sets
EDP No. 162003



No. HRH Wood-compo Ratchet Handle



EDP No.	Model	Designation Insertion (mm)	Feed Angle (°)	D Head Width(mm)	H Thickness incl. SQ Head(mm)	H2 Grip(mm)	L Overall Length(mm)
162004	HRH2-W	1/4"sq. (6.35mm)	5°	20	20	30	145
162005	HRH3-W	3/8"sq. (9.5mm)	5°	25	27	30	180

Inner Ctn.: 6 pcs Outer Ctn.: 60 pcs

⚠ Cautions

- Confirm the appropriate applications, size, and way of use before use.
- Be careful of the electric short circuit and electric shock.
- Overloaded work may damage the screws or cause injury.
- Keep this product away from children.

VESSEL Co., Inc.

17-25, Fukae-Kita 2-chome, Higashinari-ku, Osaka 537-0001 JAPAN
Tel : +81 (0)6 6976 7778 Fax : +81 (0)6 6972 9441
E-mail : export@vessel.co.jp URL : www.vessel.co.jp/english/

VESSEL EUROPE

6, avenue du 1er Mai, ZAE Les Glaises, 91120 Palaiseau FRANCE
Tel : +33(0)1 69 19 17 42 Fax : +33(0)1 69 19 42 20
E-mail : contact@vessel-europe.com URL : www.vessel-europe.com

VESSEL TOOLS USA, INC.

1012 Brioso Drive, Suite 107, Costa Mesa, CA 92627 U.S.A.
Tel : +1 714 902 2112 Fax : +1 714 908 8111
E-mail : miyata@vessel.co.jp URL : www.vesseltoolsusa.com

Distributed by

19072521.01

- Product specifications, dimensions, pricing, and other information are subject to change without notice.
- Static electricity erasing capability values given in this catalog were obtained in our measurement environment. Your results may differ depending on the operating environment.